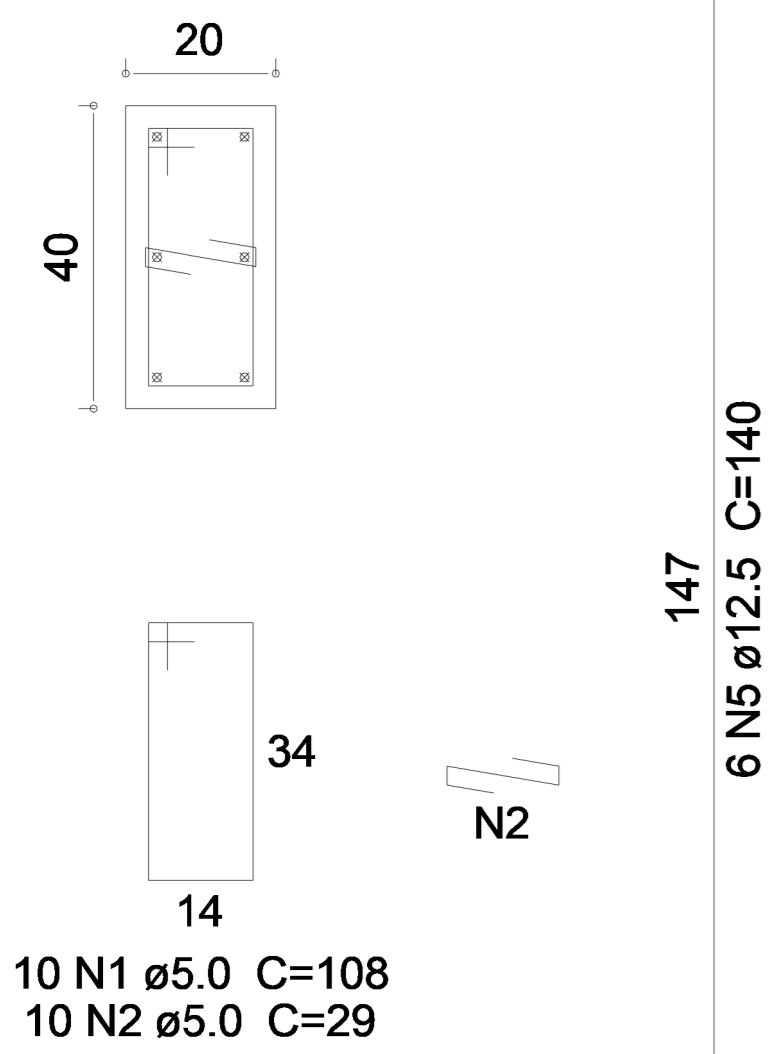


Detalhe construtivo do Muro de Arrimo - Hmax = 1,40 m

Pilar (20 X 40 cm)

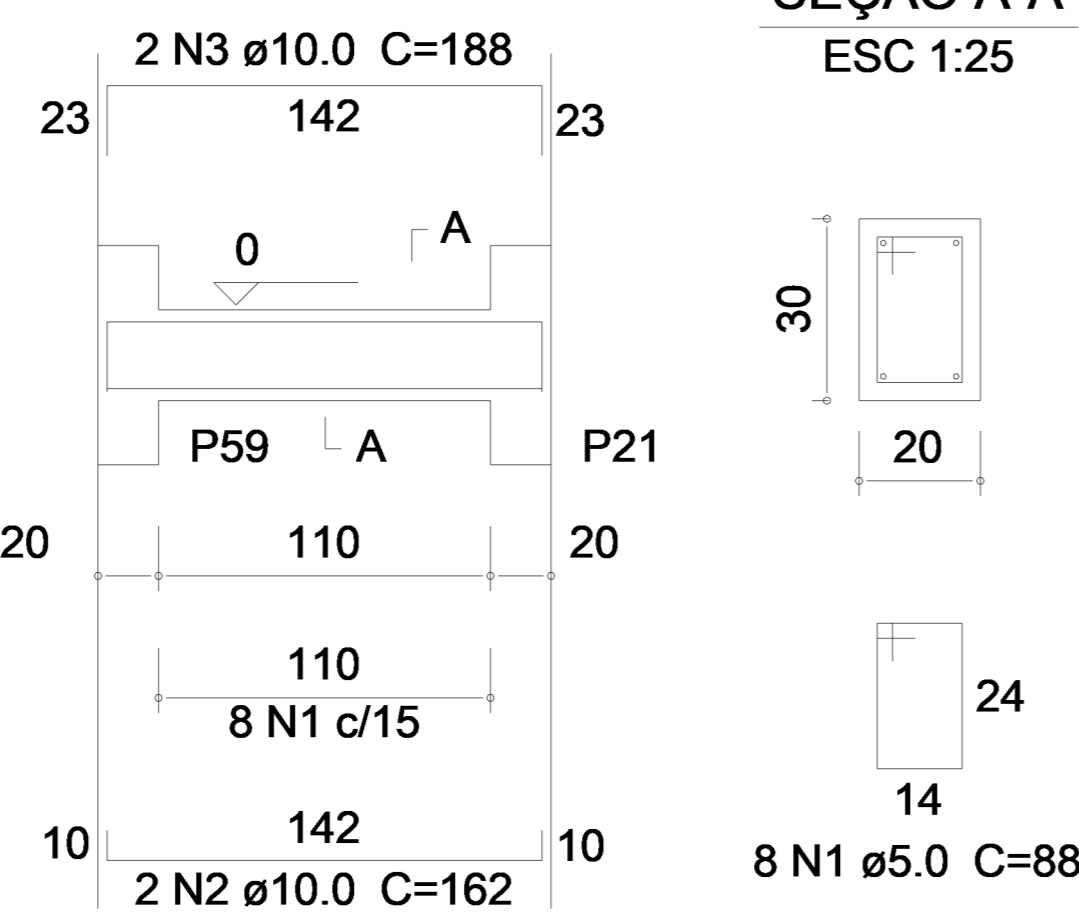
4,5 - L4

ESC 1:20

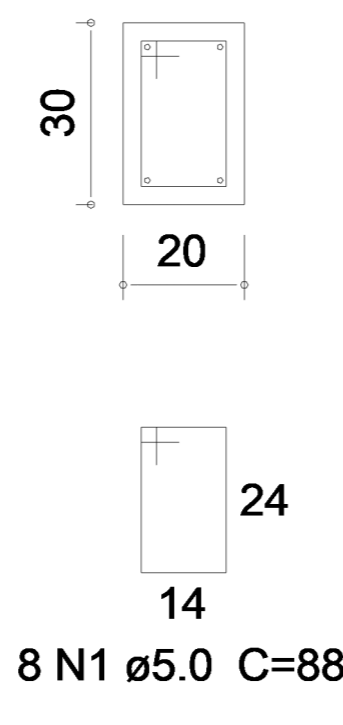


Viga (Superior e Inferior) (30 X 20 cm)

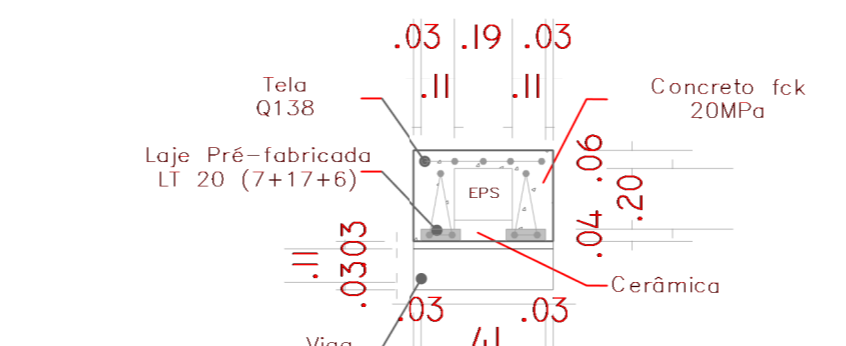
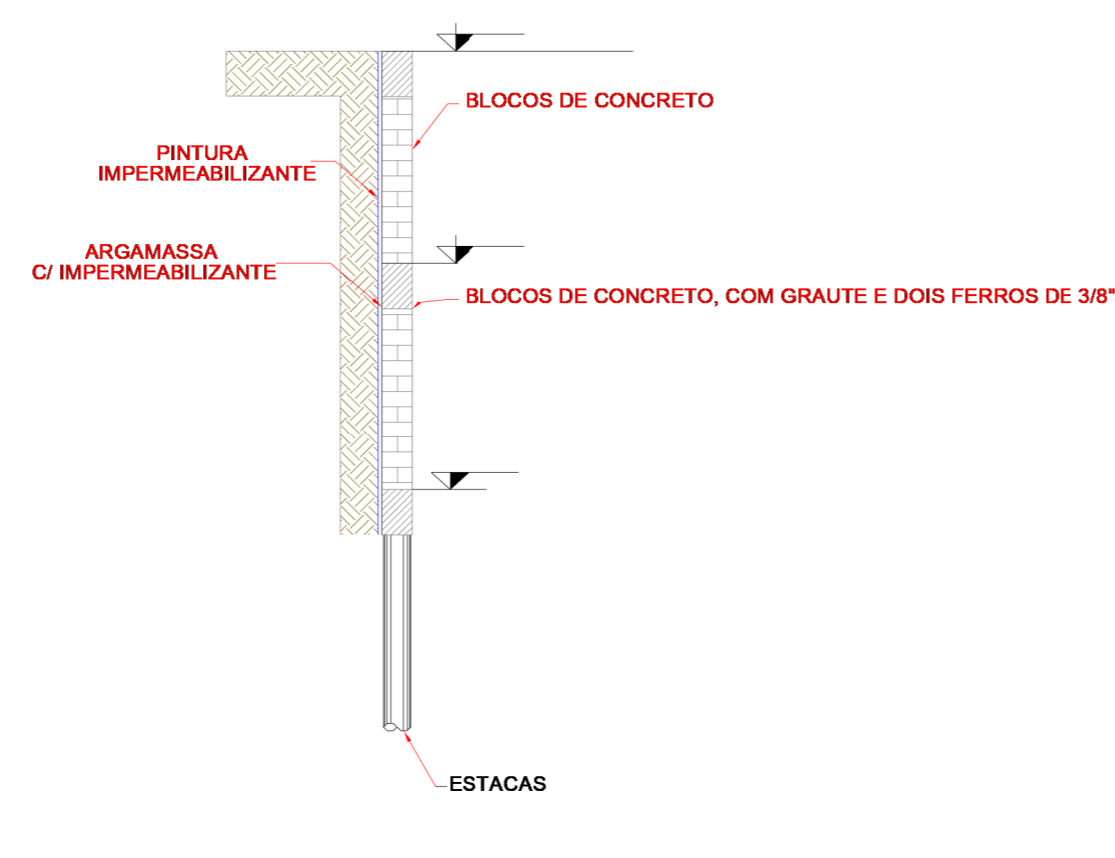
ESC 1:50



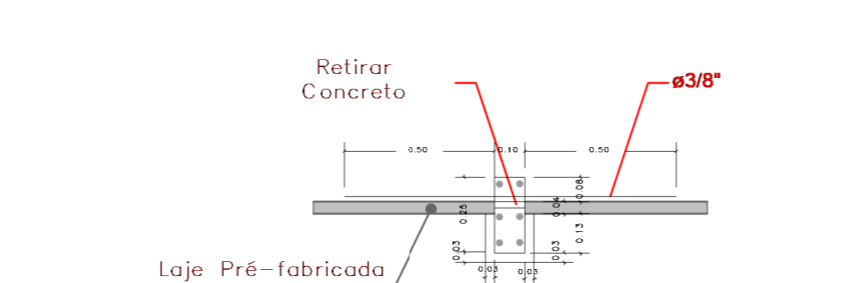
SEÇÃO A-A ESC 1:25



CORTE ESQUEMÁTICO DRENAGEM SEM ESCADA

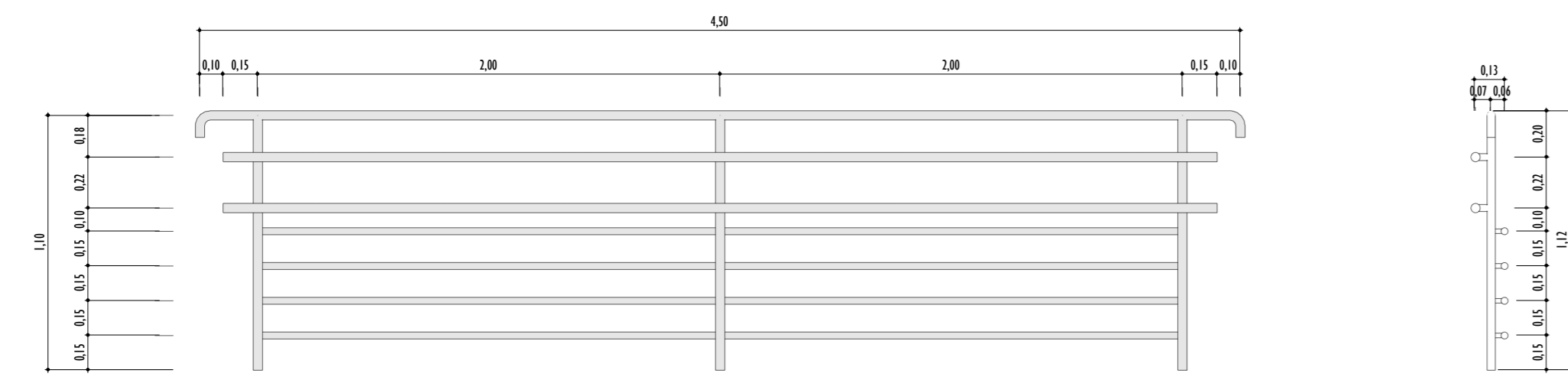


2 DET. BANCO2 1:25



3 DET. BANCO2 1:25

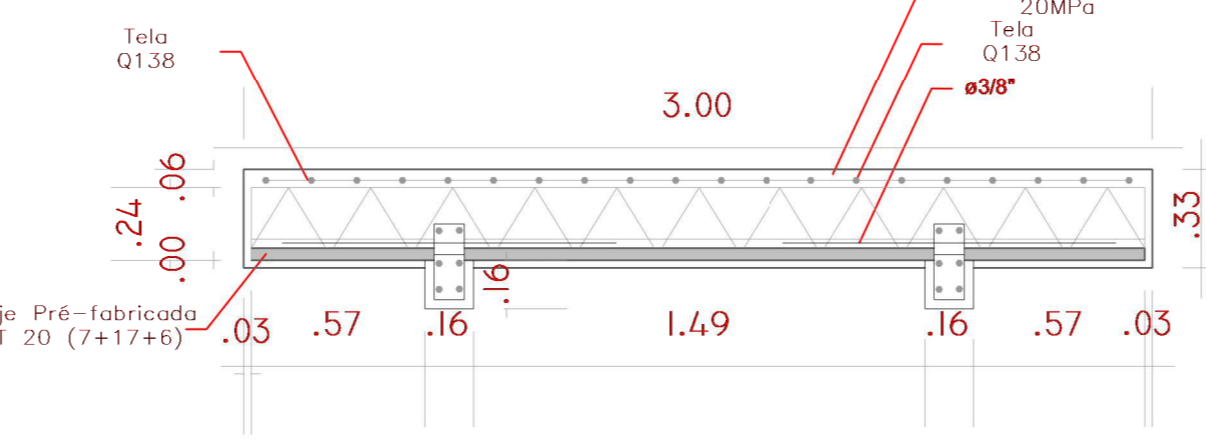
1 MURO ARRIMO 1:50



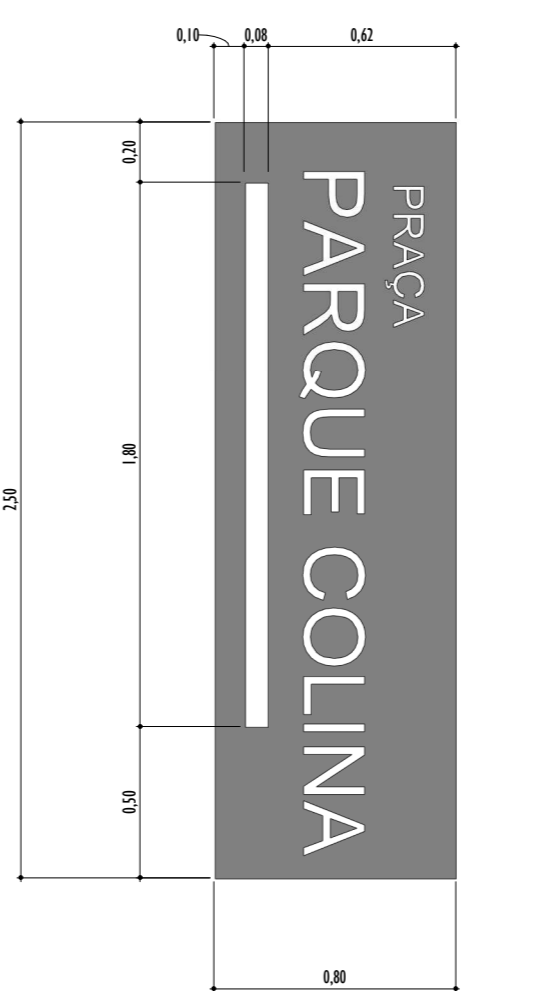
4 GUARDA-CORPO A 1:25

5 GUARDA-CORPO B 1:25

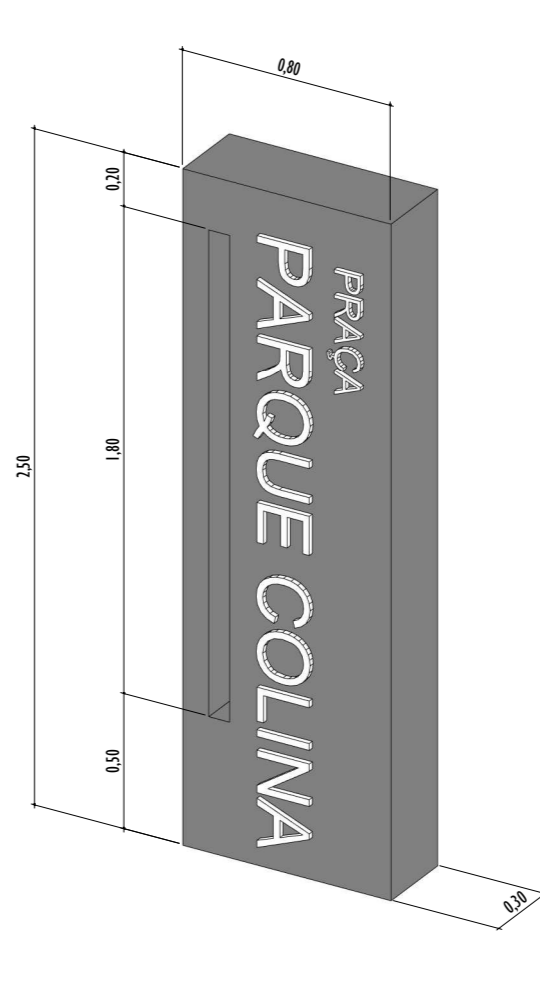
6 DET. BANCO1 1:25



7 DET. BANCO1 1:25



8 TÔTEMI 1:25

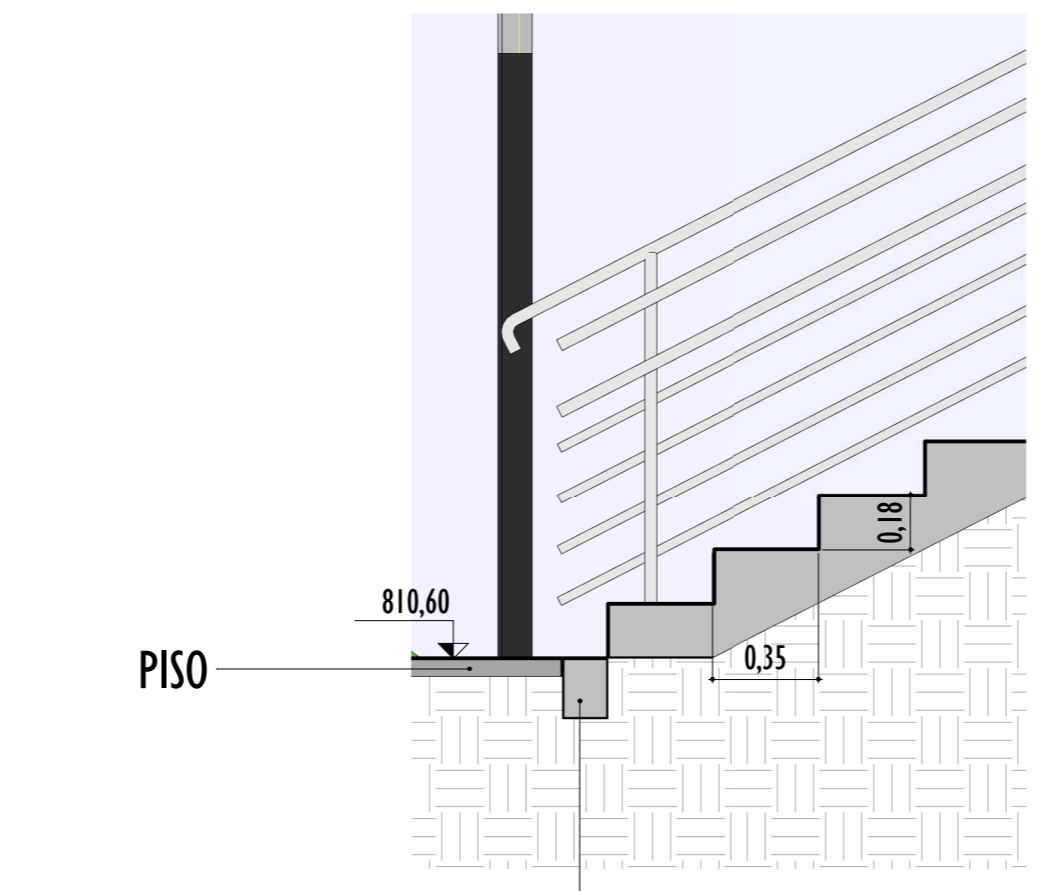


9 3D TÔTEM 1:25

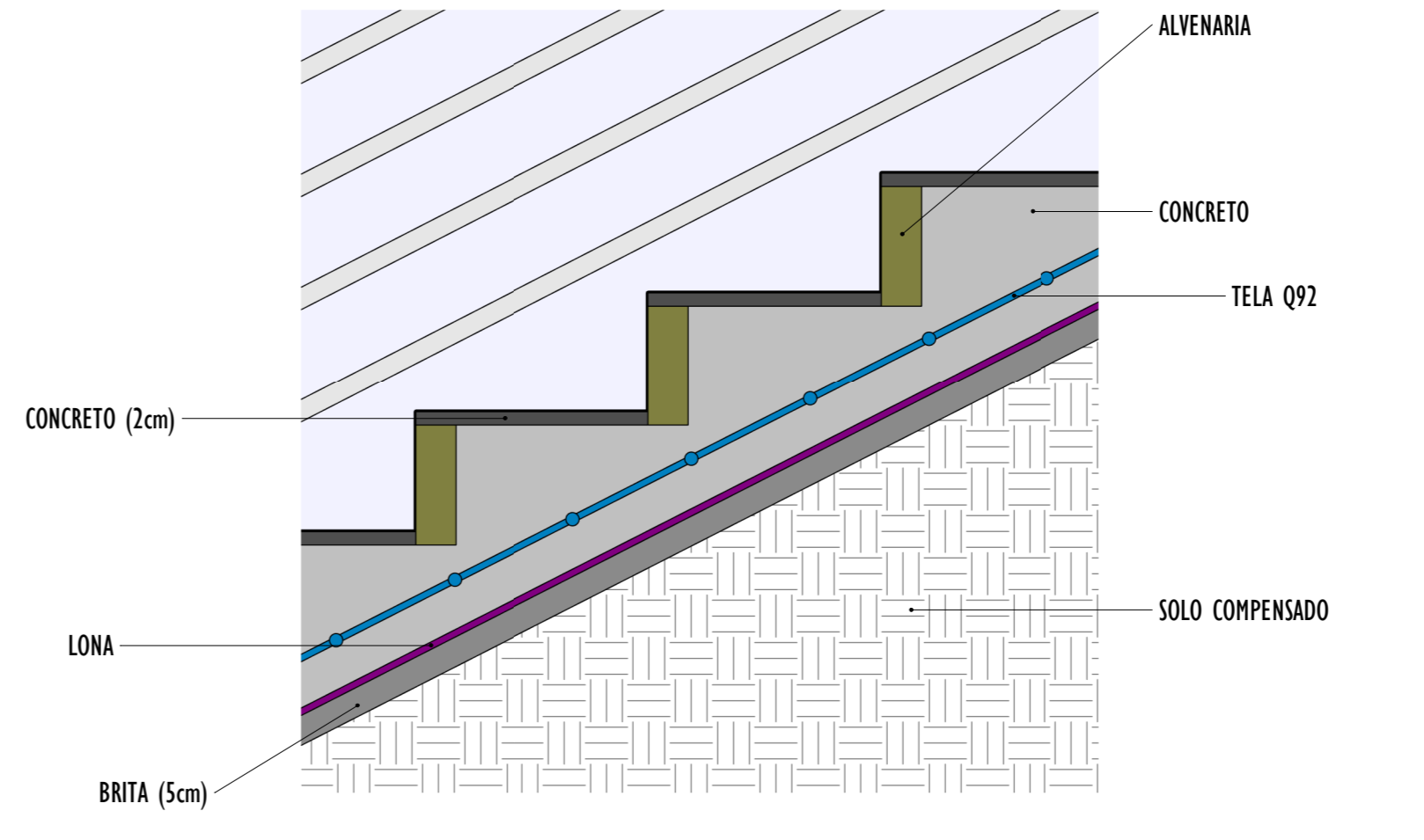


Pilar (30 x 80 cm) PLANTA ESC 1:25				Relação do aço			
ELEMENTO	AÇO	Nº	DIAM (mm)	QUANT (Barra)	UNIT (mm)	C.TOTAL (mm)	PESO (kg)
Tela	CASO 1	5,0	17	225	3025		
	CASO 2	5,0	17	40	1070		
	CASO 3	10,0	8	222	2376		
Resumo do aço							
AÇO	DIAM	C.TOTAL	PESO + 10%				
	(mm)	(mm)	(kg)				
CASO	5,0	17,12	7,34				
Peso Total							
CASO		7,34					
Volume de concreto (C-20) = 0,29 m³							
Área de forma = 0,80 m²							
Estruc 01.25.01 - 4,00 m							

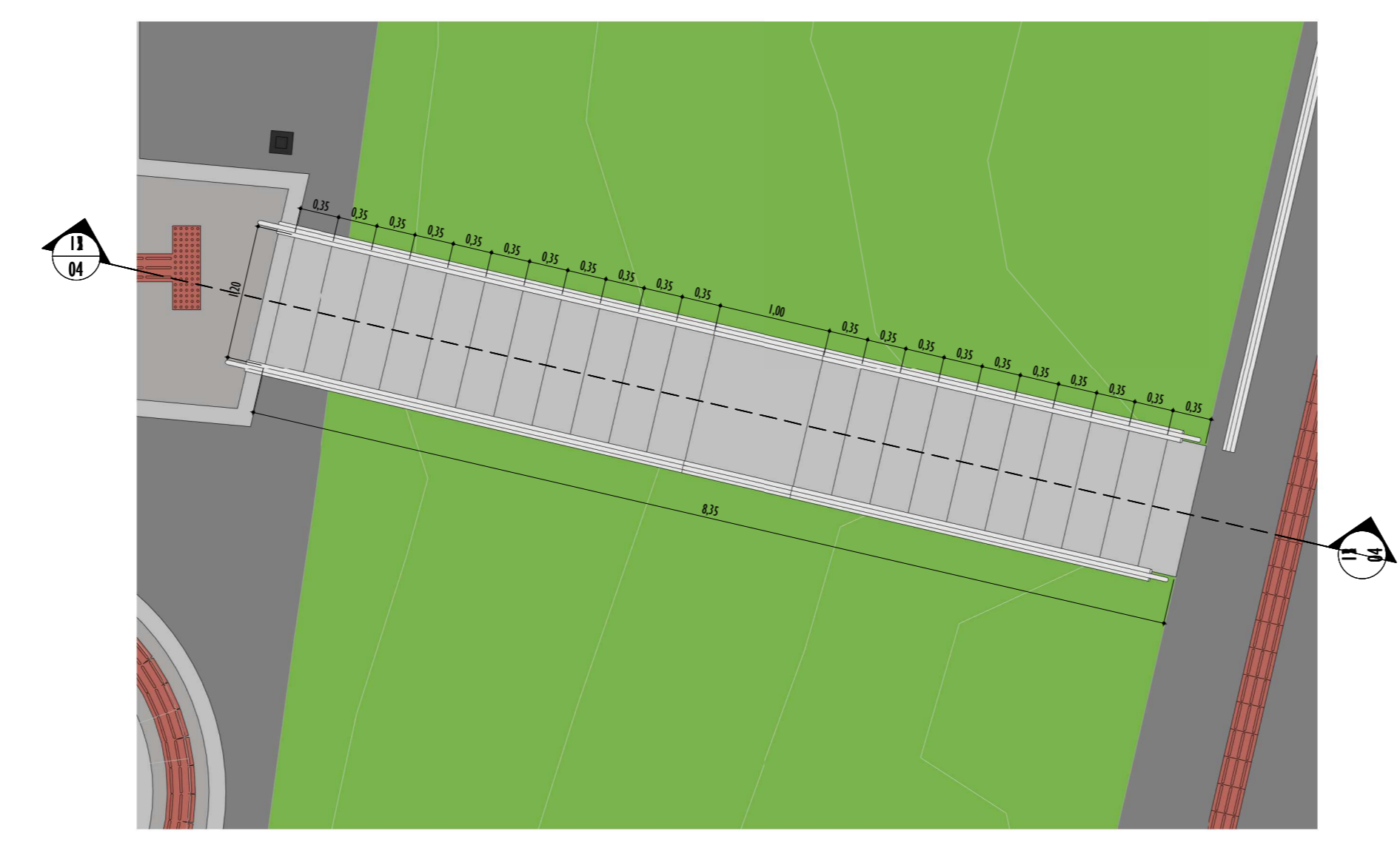
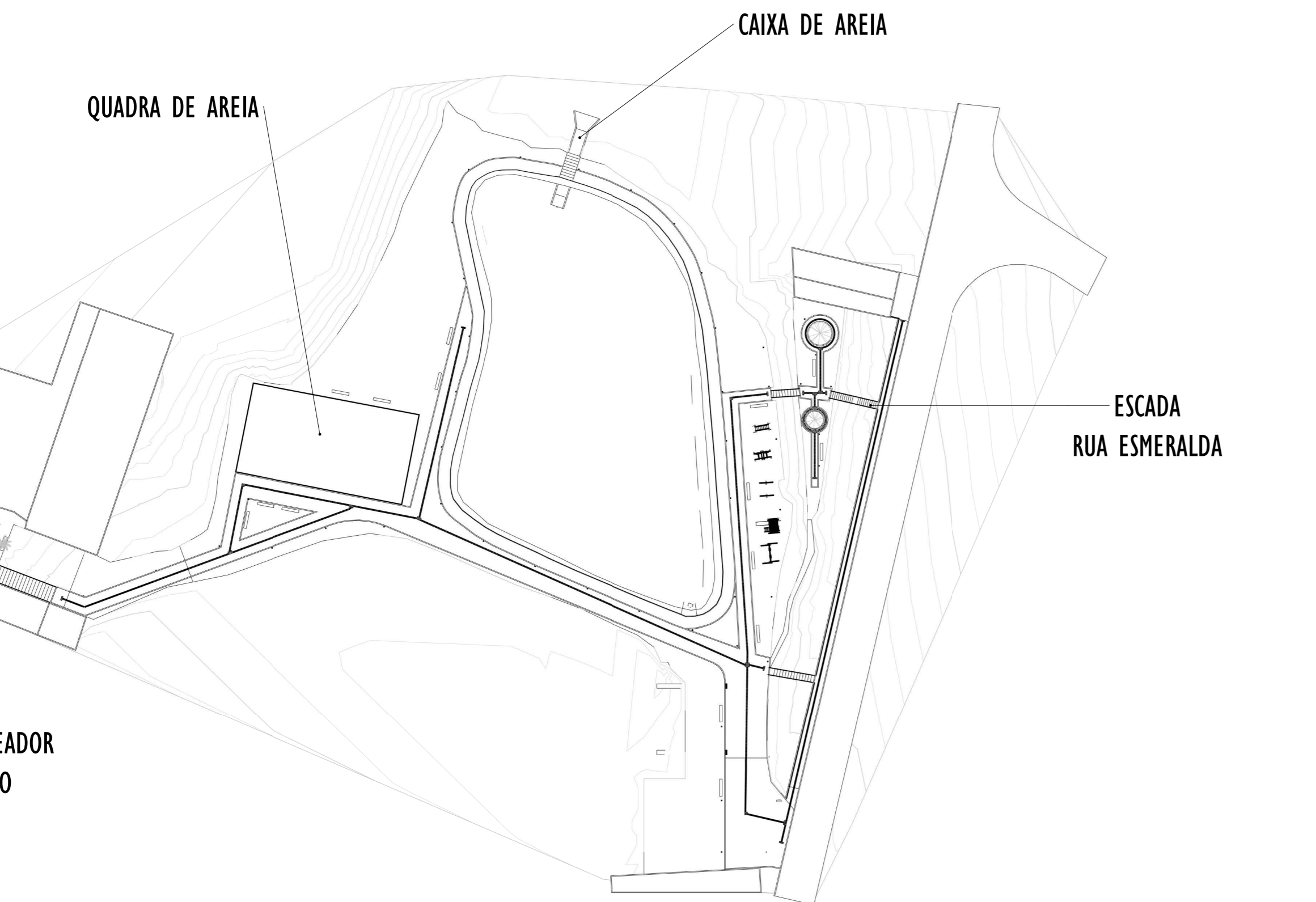
10 TÔTEM 1:50



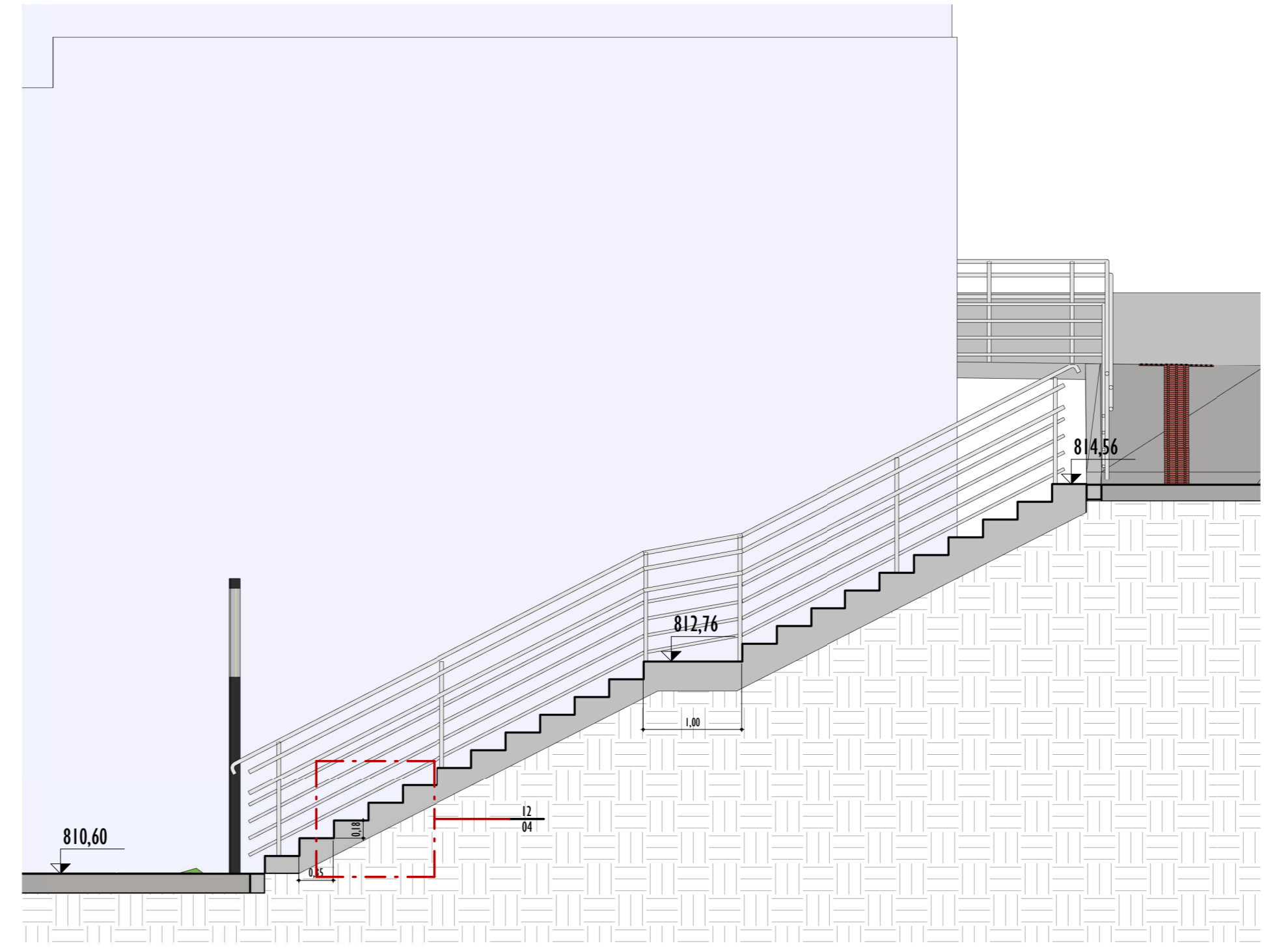
11 ESCADA RUA DET 1:25



12 DETALHE ARMADURA ESCADA 1:10



14 PLANTA ESCADA RUA 1:50



15 ESCADA RUA 1:50

REVITALIZAÇÃO DE PRAÇA DO PARQUE COLINA FOLHA 4/5

PROJETO DE DETALHES CONSTRUTIVOS

LOCAL: CABREÚVA - SP

ENDEREÇO: BAIRRO COLINA, RUA ESMERALDA, S/N.

PROPRIETÁRIO: PREFEITURA MUNICIPAL DE CABREÚVA

SITUAÇÃO SEM ESCALA: PARQUE COLINA DO LAGO

PROFESSORA: PROFFESSORA MUNICIPAL DE CABREÚVA RESPONSÁVEL: ENGENHEIRO CIVIL - CREA -

RESPONSÁVEL TÉCNICO: RESPOSTA TÉCNICA: RESPOSTA TÉCNICA: ENGENHEIRO CIVIL - CREA - SÃO PAULO/SP - 4-OP. INSCRIÇÃO: ENGENHEIRO CIVIL

COORDENADAS: -23.25.9014300205457, -47.05463866678957

CAMPO:

13 PLANTA PARQUE - EQUIPAMENTOS 1:750